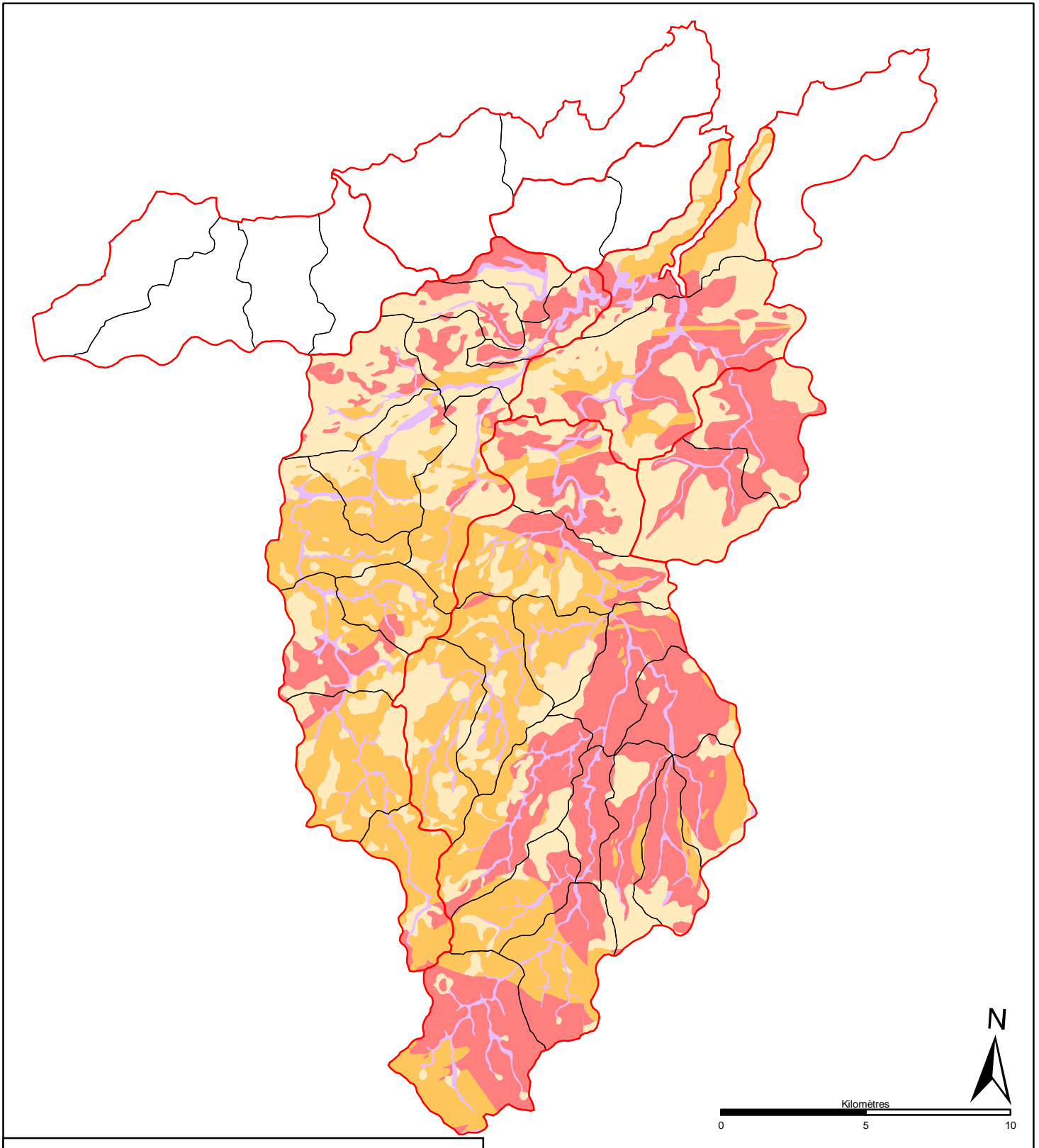

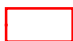






Formations superficielles du sol sur le bassin versant du Jaudy-Guindy-Bizien



Types de sol

- | | |
|--|---|
|  Sols bruns lessivés |  Bassin versant |
|  Sols bruns |  Sous-bassin versant |
|  Sols bruns acides | |
|  Sols alluviaux | |

Méthode : Analyse des cartes du BRGM
et confrontations terrain
Date : Novembre 2002